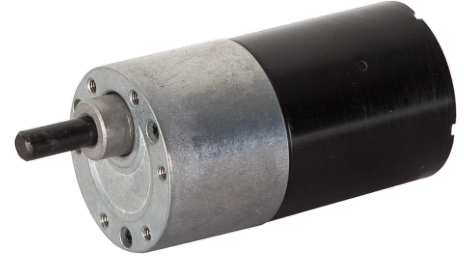
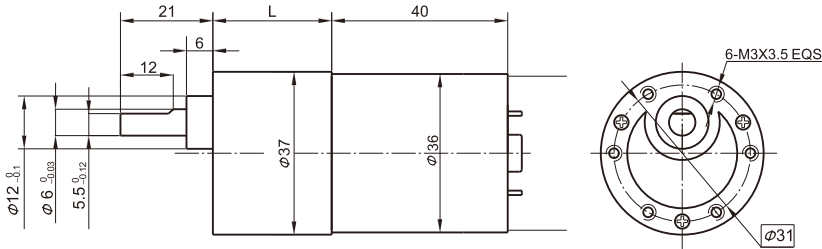


# 37JB10K/36ZWNP40

Φ 37标准型减速器, 允许转矩范围: 0.6N.m  
37mm OD Standard Gearbox,  
Permissible Load Range: 0.6N.m

无刷直流电动机, 3相4极, 内置驱动器 3 phase 4 poles brushless DC motor, with built-in driver

## ● 外形和安装尺寸 Dimensions



## ● 无刷电动机主要技术参数 Brushless Motor Technical Data

电机型号 TYPE	极数 Number of poles	相数 Number of phase	额定电压 Rated voltage VDC	空载转速 No-load speed r/min	空载电流 No-load current mA	额定转矩 Rated torque mN.m	额定转速 Rated speed r/min	额定电流 Rated current mA	额定功率 Rated power W
36ZWNP40-1240	4	3	12	4000	400	15	3000	850	4.7
36ZWNP40-2440	4	3	24	4000	200	20	3000	550	6.3

## ● 无刷行星齿轮减速电机主要技术参数 Brushless Gear Motor Technical Data

配置36ZWNP40-1240无刷直流电机 (36ZWNP40-1240 BLDC Motor)

减速比 Reduction ratio	6	10	18	30	50	75	100	150	200	250
减速级数 Number of gear trains	2	2	3	3	4	4	4	5	5	5
减速器长度(L) Length(L) mm	21.5	21.5	26.5	26.5	29	29	29	31.5	31.5	31.5
空载转速 No-load speed r/min	667	400	222	133	80	53	40	27	20	20
额定转速 Rated speed r/min	500	300	167	100	60	40	30	20	15	12
额定转矩 Rated torque N.m	0.07	0.12	0.20	0.33	0.49	0.73	0.96	1	1	1
最大瞬间允许负载 Max. permissible load in a short time N.m	0.5	0.5	1.5	1.5	3	3	3	3	3	3
转向 Direction of rotation	CCW	CCW	CW	CW	CCW	CCW	CCW	CW	CW	CW

配置36ZWNP40-2440无刷直流电机 (36ZWNP40-2440 BLDC Motor)

减速比 Reduction ratio	6	10	18	30	50	75	100	150	200	250
减速级数 Number of gear trains	2	2	3	3	4	4	4	5	5	5
减速器长度(L) Length(L) mm	21.5	21.5	26.5	26.5	29	29	29	31.5	31.5	31.5
空载转速 No-load speed r/min	667	400	222	133	80	53	40	27	20	15
额定转速 Rated speed r/min	500	300	167	100	60	40	30	20	15	12
额定转矩 Rated torque N.m	0.10	0.16	0.26	0.44	0.65	0.98	1	1	1	1
最大瞬间允许负载 Max. permissible load in a short time N.m	0.5	0.5	1.5	1.5	3	3	3	3	3	3
转向 Direction of rotation	CCW	CCW	CW	CW	CCW	CCW	CCW	CW	CW	CW

## ● 接线方式 Wire Diagram

VCC接电源正极、GND接电源负极, 不能接反。  
FR正反转信号线, 悬空或接5V时电机转向CCW, 接GND转向CW。  
FG转速信号线, 电机每转一周输出2个方波信号。  
PWM调速信号输入, 接+5V时电机全速, 接GND停止。  
BRK制动信号输入, 接GND时制动。

Vcc connects positive wire, GND connects negative wire.  
FR is signal wire for differentiating CCW and CW. Motor rotation is CCW when FR is disconnected or connected with 5V. Motor rotation is CW when FR is connected with GND.  
FG is wire for speed signal, motor outputs 2 quare signals per revolution.  
PWM input speed control signal, connect +5V for motor full-speed working, while connect GND for stopping.  
BRK is braking signal input, connect GND for braking.

## 无刷电机的接线端子排序 BLDC Motor Wiring Diagram

