

# 行星齿轮减速器 (内齿圈材质: 金属和粉末金属)

## Planetary Gearbox (Ring Gear Material: Metal and Powder Metal)

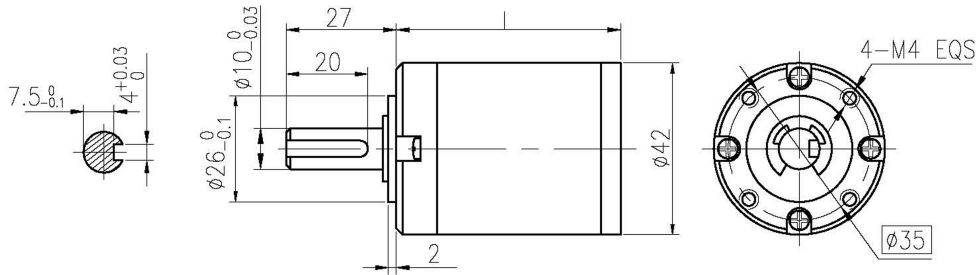
**42JXE100K**       $\phi 42$  行星减速器, 允许转矩范围: 1N.m~10N.m  
 42mm Planetary Gearbox  
 Permissible Load Range: 1N.m~10N.m

Ring gear can be selected within the two materials : Powder metal ( Type:42JMF100K ), Metal ( Type:42JM100K )

内齿圈材料 Ring material	JM 型: 金属 Metal JMF 型: 金属粉末 Powder meta
输出轴承形式 Bearing at output	滚动轴承 Ball bearings
最大允许径向负载 (离法兰 12mm 处) Max. Radial load ( 12mm from flange )	200N
最大允许轴向负载 Max. shaft axial load	100N
径向间隙 (测量点尽量接近法兰) Radial play of shaft ( near to flange )	≤0.06 mm
轴向间隙 Axial play of shaft	≤0.3 mm
背隙 (无负载时) Backlash at no-load	≤2.5°
输出轴最大承受压入力 Shaft press fit force, max	150N



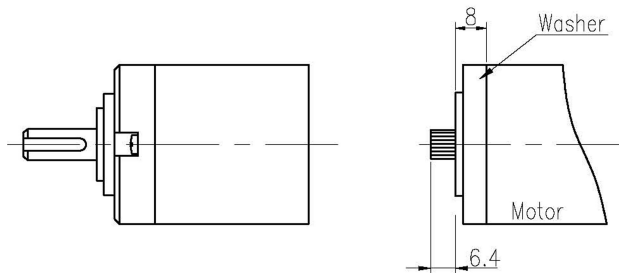
### 外形和安装尺寸 Dimensions



### 电机轴齿轮型式 Pinion Specifications

模数 Module	0.6							
齿数 No. of teeth	11				17			
压力角 Pressure angle	20°							
孔径 Hole diameter	Φ3.16		Φ3.98		Φ4.48			
减速比 Reduction ratio	1/5.18	1/19	1/27	1/254	1/306	1/3.71	1/14	1/182
	1/71	1/100	1/100	1/354	1/427	1/51	1/189	1/219
	1/139	1/264	1/369	1/495	1/596			
	1/516	1/720						

### 电机轴齿轮装配 Motor Installation



### 标准减速比型式 Gearbox Specifications

使用环境相对湿度: 20%~85%RH    使用环境相对温度: -20°C~+80°C, 可扩展温度选项-35°C~+80°C

减速比 Reduction ratio	实际减速比 Exact reduction ratio	额定允许负载 Rated tolerance torque	瞬间允许负载 Max momentary tolerance torque	效率 Efficiency	L (mm)	重量 (g) Weight(g)
1/3.7 1/5.2	1/3.71 1/5.18	1.0 N.m	3.0 N.m	90 %	31.5±0.5	244
1/14 1/19 1/27	1/13.76 1/19.22 1/26.83	4.0 N.m	12 N.m	81 %	42.1±0.5	314
1/51 1/71 1/100 1/139	1/51.06 1/71.30 1/99.55 1/138.99	8.0 N.m	25 N.m	73 %	52.5±0.5	433
1/182 1/219 1/254 1/306 1/354 1/427 1/495 1/596	1/181.79 1/219.07 1/253.82 1/305.87 1/354.39 1/427.06 1/494.81 1/596.27	10 N.m	30 N.m	66 %	62.9±0.5	519

输入与输出的旋转方向: 同向    推荐电动机最大输入转速: < 8000rpm

Operating ambient humidity: 20%~85%RH    Operating ambient temp.: -20°C~+80°C

Input & output same rotation direction    Motor Max. input speed < 8000rp