

# 永磁直流齿轮减速电机 PM DC Spur Gear Motor

## 60JB50K/52ZY95

允许转矩范围:0.5N.m~5N.m  
Permissible Load Range: 0.5N.m~5N.m

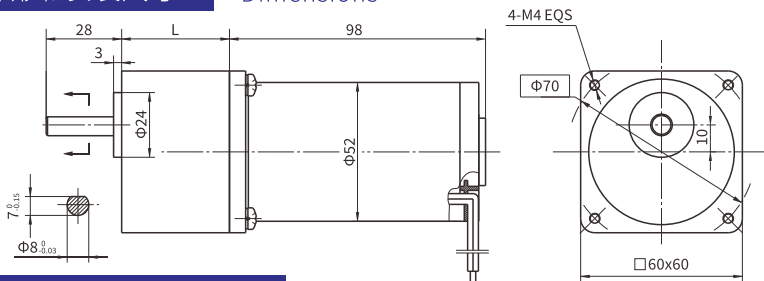
### 产品特点 and 用途

### Description of The Product

- 60mm 的一体式齿轮减速器, 允许负载 5.0N.m, 合金结构钢齿轮, 全部滚动轴承的配置。
- 60mm integrated gearbox, with rated torque up to 5.0 N.m, alloy constructional steel gears, all equipped with ball bearings.

### 外形和安装尺寸

### Dimensions



### 电动机主要技术参数

### Motor Technical Data

电机型号 Type	额定电压 Rated Voltage VDC	空载转速 No-load Speed r/min	空载电流 No-load Current A	额定转速 Rated Speed r/min	额定转矩 Rated Torque mN.m	输出功率 Output Power W	额定电流 Rated Current A	堵转力矩 Stall Torque N.m	堵转电流 Stall current A
52ZY95-2420	24	2000	0.2	1600	80	15	1.2	0.40	4.2
52ZY95-2430	24	3000	0.3	2400	100	25	1.8	0.41	6.0

### 齿轮减速电机主要技术参数

### Gear Motor Technical Data

配置52ZY95-2420直流电机(52ZY95-2420 DC Motor)

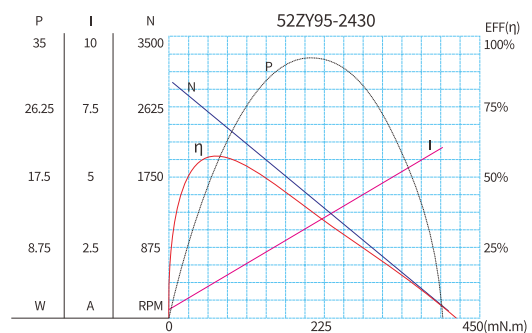
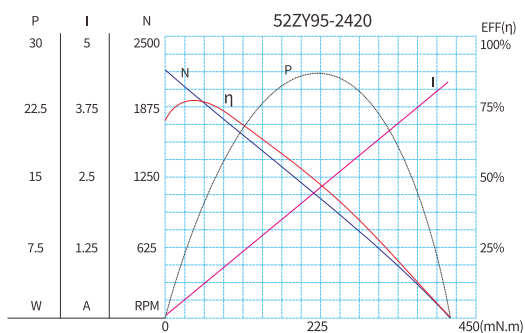
减速比 Reduction ratio	3.6	5	7.5	10	12.5	15	18	20	25	30	40	50	75	90	100	120
减速级数 Number of gear trains	2	2	2	2	2	2	2	3	3	3	3	3	4	4	4	4
减速器长度(L) Length mm	32	32	32	32	32	32	32	40	40	40	40	40	40	40	40	40
空载速度 No-load speed r/min	556	400	267	200	160	133	111	100	80	67	50	40	27	22	20	16
额定转速 Rated speed r/min	444	320	213	160	128	106	89	80	64	53	40	32	21	18	16	13
额定转矩 Rated torque N.m	0.26	0.32	0.48	0.64	0.81	0.97	1.16	1.18	1.4	1.7	2.3	2.9	3.9	4.7	5.0	5.0
最大瞬间允许负载 Max. permissible load in a short time N.m	3.0	3.0	3.0	3.0	3.0	3.0	3.0	8.0	8.0	8.0	8.0	8.0	10	10	10	10
转 向 Direction of rotation	CW	CW	CW	CW	CW	CW	CW	CCW	CCW	CCW	CCW	CCW	CW	CW	CW	CW

配置52ZY95-2430直流电机(52ZY95-2430 DC Motor)

减速比 Reduction ratio	3	5	7.5	10	12.5	15	18	20	25	30	40	50	75	90
减速级数 Number of gear trains	2	2	2	2	2	2	2	3	3	3	3	3	4	4
减速器长度(L) Length mm	32	32	32	32	32	32	32	40	40	40	40	40	40	40
空载速度 No-load speed r/min	1000	600	400	300	240	200	167	150	120	100	75	60	40	33
额定转速 Rated speed r/min	800	480	320	240	192	160	133	120	96	80	60	48	32	27
额定转矩 Rated torque N.m	0.24	0.4	0.6	0.8	1.0	1.2	1.45	1.5	1.8	2.1	2.9	3.6	4.9	5.9
最大瞬间允许负载 Max. permissible load in a short time N.m	3.0	3.0	3.0	3.0	3.0	3.0	3.0	8.0	8.0	8.0	8.0	8.0	10	10
转 向 Direction of rotation	CW	CW	CW	CW	CW	CW	CW	CCW	CCW	CCW	CCW	CCW	CCW	CW

### 电动机特性图

### Motor Characteristic Figure



东政智造 驱动未来

DONGZHENG INTELLIGENT MANUFACTURE DRIVE THE FUTURE