

混合式步进行星齿轮减速电机 (内齿圈材质: 金属)

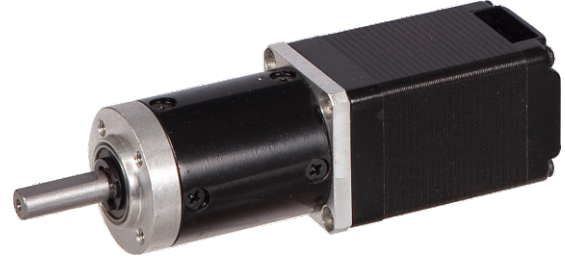
Planetary Gear Stepping Motor (Ring Gear Material: Metal)

**28JXS40K/28STH**

Φ28行星减速器, 允许转矩范围: 1.2N.m~4.0N.m  
28mm Planetary Gearbox  
Permissible Load Range: 1.2N.m~4.0N.m

● 行星齿轮减速器 Planetary Gearbox

内齿圈材料	Ring material	金属 Metal
输出轴轴承形式	Bearing at output	滚动轴承 Ball bearings
最大允许径向负载 (离法兰10mm处) Max. Radial load(10mm from flange)		≤35N
最大允许轴向负载 Max. shaft axial load		≤25N
径向间隙 (测量点尽量接近法兰) Radial play of shaft (near to flange)		≤0.07 mm
轴向间隙 Axial play of shaft		≤0.3 mm
背隙 (无负载时) Backlash at no-load		≤1.5°



● 28STH混合式步进电机性能 28STH Hybrid Stepping Motor Specifications

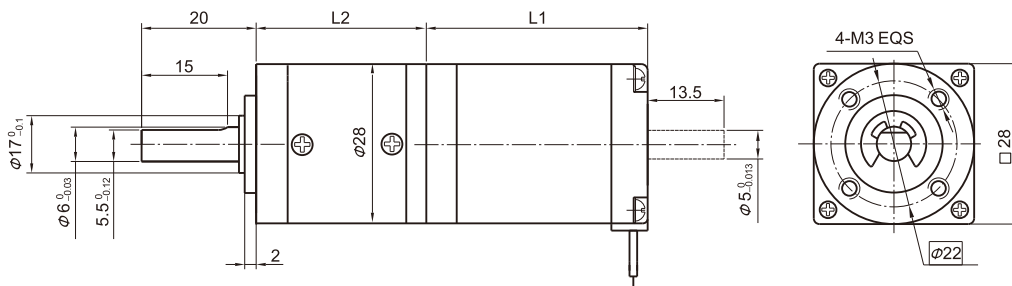
Model No.	额定电压 Rated Voltage	每相电流 Current /Phase	每相电阻 Resistance /Phase	每相电感 Inductance /Phase	保持转矩 Holding Torque	引出线数 # of Leads	转动惯量 Rotor Inertia	重量 Weight	长度 L1 Length L1	适配减速比 Max. Gear Ratio
单轴 Single Shaft	V	A	Ω	mH	g.cm		g-m <sup>2</sup>	g	mm	
28STH45-0956A	3.4	0.95	3.4	1.2	750	6	12	44.5	44.5	≤1:189
28STH51-0956A	4.4	0.95	4.6	1.8	900	6	18	50.5	50.5	≤1:189

常规产品是单出轴, 可以订货双出轴, 型号的后缀号A改为B。 A Single Shaft, B Double shaft

● 28JXS40K行星减速器性能 28JXS40K Planetary Gearbox Specifications

减 速 比 Reduction ratio	3.71	5.18	14	19	27	51	71	100	139	189	264	369
减速级数 Number of gear trains	1		2			3			4			
减速器长度 (L2) Length(L2) mm	31.0		40.1			49.0			57.9			
最大额定转矩 Max. rated torque	kg.cm		12			20			32			
瞬间允许转矩 Short time permissible torque	kg.cm		36			60			96			
效率 Efficiency	%		90%			81%			73%			
重量 Weight	g		60			85			95			

● 外形和安装尺寸 Dimensions



● 矩频曲线 Frequency-torque Characteristics

