

混合式步进行星齿轮减速电机 (内齿圈材质: 金属和粉末金属)

Planetary Gear Stepping Motor (Ring Gear Material: Metal and Powder Metal)

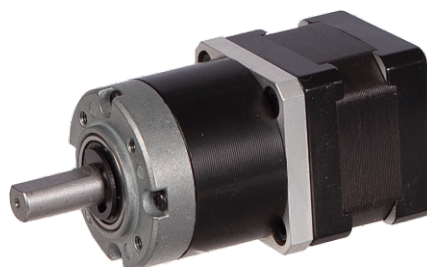
**36JXES60K/35STH**

Φ36行星减速器, 允许转矩范围: 1.8N.m~6.0N.m  
36mm Planetary Gearbox  
Permissible Load Range: 1.8N.m~6.0N.m

可在两种材料的内齿圈中进行选择: 粉末金属 (型号36JXF60K), 金属 (型号36JXE60K)  
Ring gear can be selected within the two materials: Powder metal (Type:36JXF60K), Metal (Type:36JXE60K)

● 行星齿轮减速器 Planetary Gearbox

内齿圈材料	Ring material	E型:金属 Metal F型:金属粉末 Powder metal
输出轴轴承形式	Bearing at output	滚动轴承 Ball bearings
最大允许径向负载 (离法兰10mm处) Max. Radial load(10mm from flange)		≤50N
最大允许轴向负载 Max. shaft axial load		≤30N
径向间隙 (测量点尽量接近法兰) Radial play of shaft (near to flange)		≤0.07 mm
轴向间隙 Axial play of shaft		≤0.3 mm
背隙 (无负载时) Backlash at no-load		≤1.5°



● 35STH 混合式步进电机性能 35STH Hybrid Stepping Motor Specifications

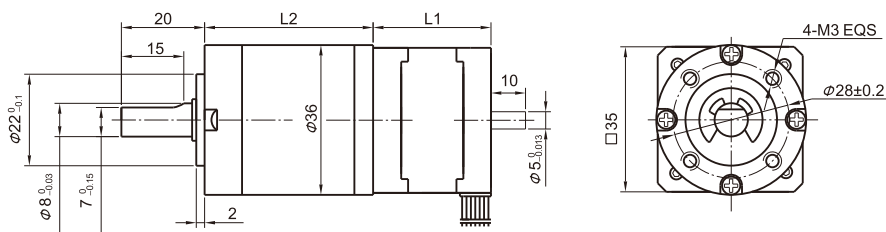
Model No.	额定电压 Rated Voltage	每相电流 Current /Phase	每相电阻 Resistance /Phase	每相电感 Inductance /Phase	保持转矩 Holding Torque	引出线数 # of Leads	转动惯量 Rotor Inertia	重量 Weight	长度 L1 Length L1	适配减速比 Max. Gear Ratio
单轴 Single Shaft	V	A	Ω	mH	g.cm		g·m <sup>2</sup>	g	mm	
35STH28-0504A	10	0.5	20	14	1000	4	11	140	28	≤1:264
35STH36-1004A	2.7	1.0	2.7	4.3	1400	4	14	180	36	≤1:189

常规产品是单出轴, 可以订货双出轴, 型号的后缀号A改为B。 A Single Shaft, B Double shaft

● 36JXES60K行星减速器性能 36JXES60K Planetary Gearbox Specifications

减速比 Reduction ratio	3.71	5.18	14	19	27	51	71	100	139
减速级数 Number of gear trains	1			2			3		
减速器长度 (L2) Length(L2) mm	27.0			34.1			41.0		
最大额定转矩 Max. rated torque	18			30			48		
瞬间允许转矩 Short time permissible torque	54			90			144		
效率 Efficiency	90%			81%			73%		
重量 Weight	195			210			290		

● 外形和安装尺寸 Dimensions



● 矩频曲线 Frequency-torque Characteristics

